

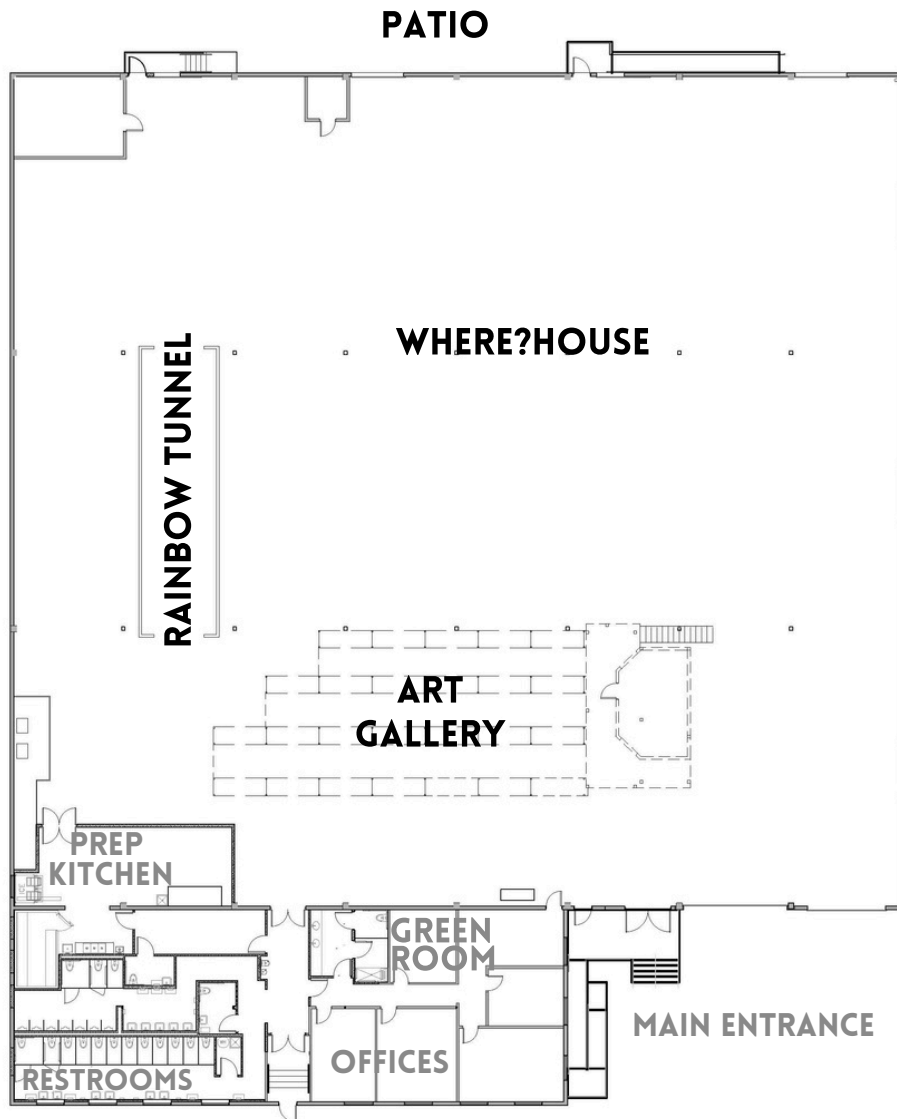
# PLAY LIKE A KID AGAIN

IMMERSIVE ENTERTAINMENT EXPERIENCES THAT DEPART FROM THE NORM. CREATE MEMORIES THAT LAST A LIFETIME.



CONCERTS • PRIVATE SHOWS • LAUNCH PARTIES • CORPORATE EVENTS • RETREATS • SEMINARS • MEETINGS • SPEAKER SERIES  
HOLIDAY PARTIES • CONFERENCES • EXPERIENTIAL EXHIBITIONS • FILM & VIDEO SHOTS • VENDOR SHOWCASE • FESTIVALS

# W — WALTER — HERE?HOUSE



## SPECS

**Indoor Space:** 27,500 sq. ft.

**Outdoor Space:** 3,700 sq. ft.

**Capacity:** 2,000+

**Height:** 23 ft. Exposed Arched beams

## AMENITIES

Open Venue  
Stage + Immersive Art Gallery  
Art Cars  
Large Art Pieces  
Patio  
Parking Lot  
Artist Green Room  
Catering Prep Area  
Walk-in Cooler & Ice Machine

**RECEPTION**  
2000+

**THEATER**  
1500

**BANQUET**  
1000

**ADDITIONAL LAYOUTS AVAILABLE**  
**ASK YOUR SALES REPRESENTATIVE FOR MORE INFORMATION**

# WALTER STUDIOS

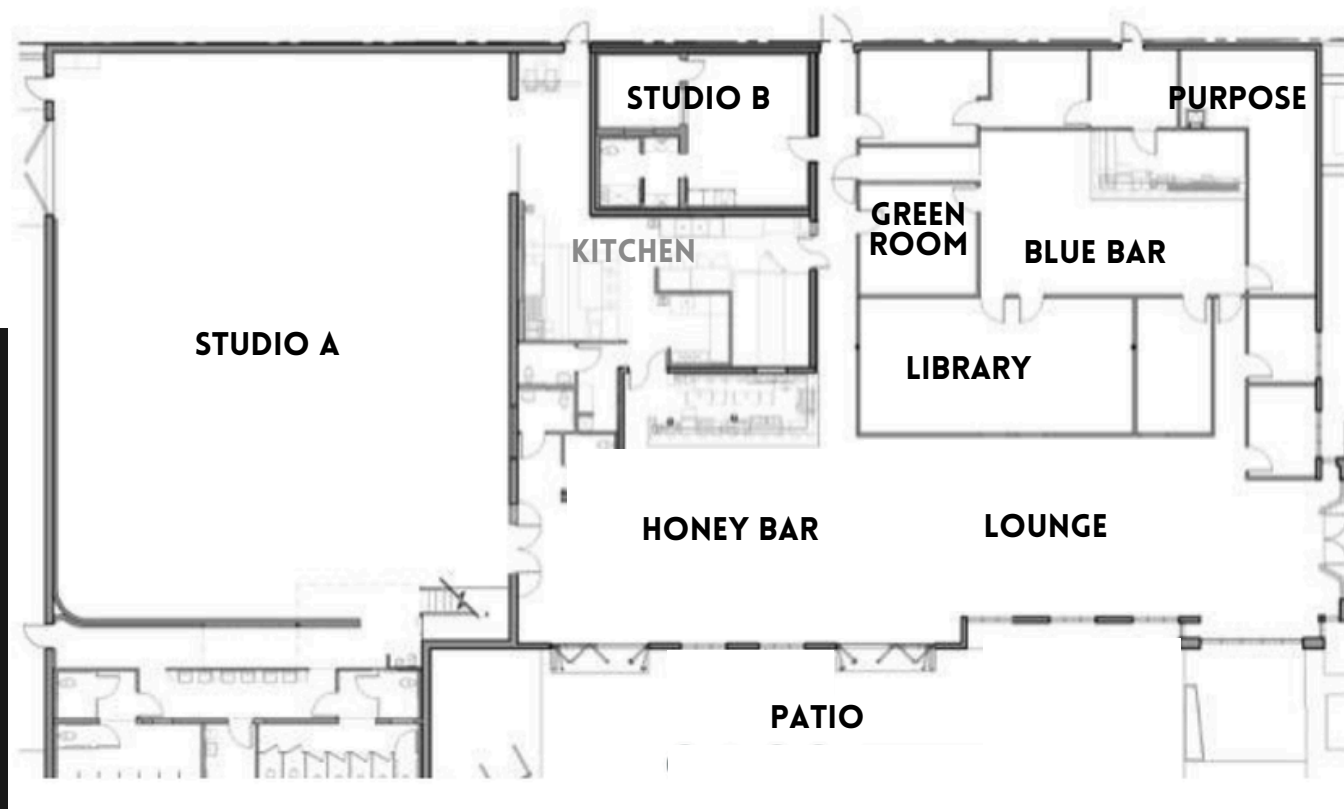
## SPECS

**Interior Space:** 14,300 sq. ft.

**Outdoor Space:** 1,600 sq. ft.

**Full Capacity:** 1,000+

**Studio A Height:** 25 ft



## AMENITIES

- Full Restaurant
- Open Venue
- Stage + Immersive Art
- Large Art Pieces
- Shaded Patio
- Large Parking Lot
- Artist Green Rooms
- Multiple Themed Rooms
- Meeting Space

ROOM	RECEPTION	THEATER	BANQUET
STUDIO A	650+	300	155
PATIO	140	70	60
LOUNGE	250	125	85
STUDIO B	35	15	--
BLUE BAR & ROOMS	200	40	90

**ADDITIONAL LAYOUTS AVAILABLE**  
**ASK YOUR SALES REPRESENTATIVE FOR MORE INFORMATION**

## **AUDIO MAINS**

---

FOH Speaker System : Meyer Sound Leopard Line Array

(6) Leopard boxes per side

(1) X-40 Series Center Fill (Flown)

(3) 900 series single 18" powered subs per side  
(In-Line LR)

(3) 1100 series dual 18" powered subs centered  
(Sub Send)

(3) X-40 Series fill delays

FOH Processing: Meyer Galaxy System Processor

(Located by Stage) AES or Analog input

FOH Console: Midas M32 with DL32 Stagebox

Monitor Console: Monitors from FOH

## **MONITOR OPTIONS**

---

(2) Meyer Sound 15" Powered Monitors

(2) Meyer Sound Dual 18" Powered Subs

DJ Mixers:

(2) Pioneer DJM-900NXS2

(1) Pioneer DJM A9

(1) Pioneer DJM-V10

(8) Pioneer CDJ 3000

## **HOUSE FILLS**

---

QSC Design Series  
distributed system in all public areas

## **LIGHTING**

---

(2) – Elation 3K Strobes

(12) – Elation Six Par 100

(2) - Radiance Hazer

(2) - Varilite 3000 Spot

(8) - Elation Platinum Beam 5R

(4) - Clay Paky Sharpy

(48) - Chauvet SlimPar Pro H USB

(2) - Martin Atomic Strobes

(4) - Elation Protron color 3K LED Strobes

(3) - Ultratec Radiance Hazer

Art Cars Controlled by RGB DMX Decoders

Control:

Chamsys PC Wing

## **POWER**

---

200A 3-Phase 208v Camloc Disconnect,  
Upstage Left

(4) 50A 208v CS-Style at various locations

## AUDIO MAINS

---

### FOH SPEAKER SYSTEM :

(8) MEYER SOUND POWERED 15"

(8) MEYER SOUND POWERED DUAL 18"

FOH PROCESSING : LAKE LM44 SYSTEM PROCESSOR (LOCATED AT FOH) AES OR ANALOG INPUT

FOH CONSOLE : MIDAS PRO 2 WITH DL251 STAGEBOX

MONITOR CONSOLE : MIDAS PRO 2 (SHARED 251) OR MONITORS FROM FOH

## MONITOR OPTIONS

---

(4) MEYER SOUND POWERED 15" FLOOR WEDGES

(2) EV POWERED 12" COAXIAL FLOOR WEDGES

(2) MEYER SOUND POWERED DUAL 18"

(4) SHURE PSM1000 IEM PACKS

(2) 16X4 CROSS STAGE SNAKES

(4) SHURE AXIENT WIRELESS HANDHELD MICROPHONES

FESTIVAL MICROPHONE KIT WITH SHURE, SENNHEISER, AND ELECTROVOICE.

HOUSE DISTRIBUTION SPEAKERS: MARTIN TEARDROP CEILING HANG SPEAKERS

## HOUSE FILLS

---

MARTIN AUDIO (LONDON)

DISTRIBUTED SYSTEM IN ALL PUBLIC AREAS

## LIGHTING

---

(12) - ELATION DARTZ 360

(6) - ELATION ARTISTE DAVINCI SPOT

(1) - ELATION ZCL 360I

(6) - ELATION SIX PAR 100

(1) - BLIZZARD MOTIF ATELIER 8FX

(2) - ETC SOURCE FOUR PARNEL FRONT WASH

(2) - ETC SOURCE FOUR PARNEL BLINDER

(4) - ELATION PROTRON COLOR 3K LED STROBE

(1) - ULTRATEC RADIANCE HAZER

50' FESTOON ROOM LIGHTING ON (4) WAHLBERG WINCH 10

### CONTROL:

CHAMSYS PC WING + CHAMSYS EXTRA WING

### ADDITIONAL LIGHTING AND FX:

(12) - ROCKVILLE BEST PAR H20

## PROJECTION

---

(1) CHRISTIE HD10K-M 3 CHIP DLP PROJECTOR (1080P)

(2) NEWTEK NDI PTZ IP CAMERAS

(1) LED WALL

3 MIL PITCH 14' X 12' 1344 PX X 1152 PX

PROJECTION MAPPING AT CYCLORAMA WALL

\*PREFERRED FILE TYPES .PNG + .MOV

## POWER

---

200A 3-PHASE 208V CAMLOC DISCONNECT,  
UPSTAGE RIGHT



**PROJECTION MAPPING**



**1080 PROJECTOR**



**PROJECTION MAPPING**



**LED WALL**



**LET'S MAKE MAGIC TOGETHER!**

[CLICK HERE TO GET STARTED](#)